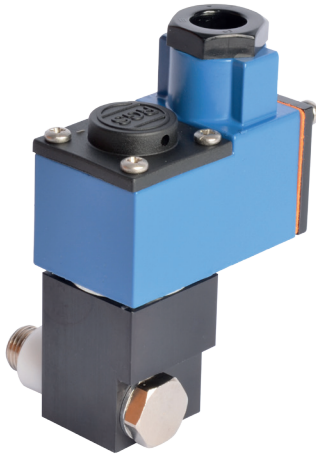
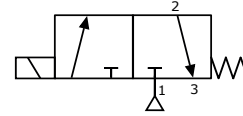


E13A-B Series, 1/4" 3/2 Function Solenoid Valve



DESCRIPTION

3 port 2 position direct acting, solenoid valve designed for direct banjo bolt mounting onto 1/4 turn pneumatically operated valve actuators having 1/4" BSP ports.

Hazardous area approved pilot operators (ExnA, Exm, Exme, Exd and Exia) are available with various international approvals – ATEX, IECEx, FM, GOST CU TR (Russia) and NEPSI (China).

Body material available in

- Aluminium (standard)

FEATURES

- Convenient single 1/4" BSP Banjo bolt connection
- Interchangeable coils, including various hazardous area options
- 1/4" BSP mains air connection and 1/8" BSP exhaust port
- Pilot exhaust dust caps fitted as standard

PRODUCT CODE:

E 1 3 A

B

OPTIONS 1

0

VOLTAGE

0

OPERATOR

COIL

DESIGNATOR

SEE BELOW FOR
PRODUCT CODE
DETAILS

Any of the below options that are not required enter '0' in relevant box.

Operator

- X** Spring return, normally closed
- Y** Spring return, normally open

Coil

- A** Exia (BASEEFA)
- B** Terminal Box
- D** Exd
- H** Plug & Socket Exia
- N** ExnA
- P** Plug & Socket
- S** Exia (BASEEFA) Stainless Steel Housing
- T** Inline Terminal Box
- U** Exia (FM)
- 0** No Coil Unit
- 9** Exm

Options 1

- C** Lever manual override
- 0** No option required

Standard Voltage

- B** 24v DC
- H** 24v DC Low Power ⁽¹⁾
- R** 24v AC (50/60 Hz)
- T** 110v AC (50/60 Hz)
- N** 220v AC (50/60 Hz)
- U** 240v AC (50/60 Hz)

* A comprehensive range of non-standard voltages available on request

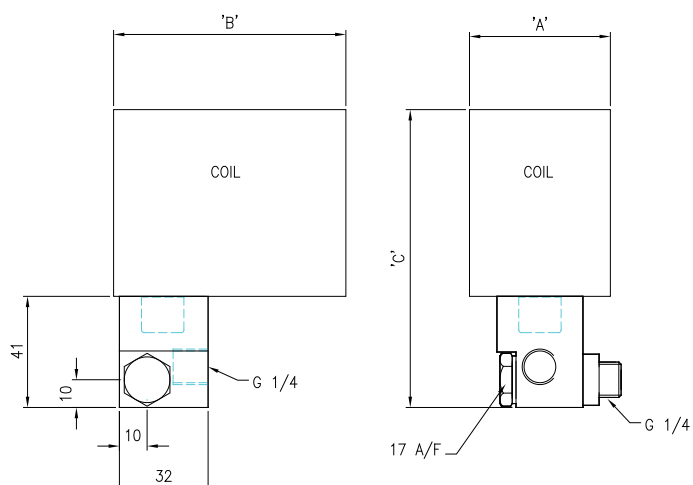
Designator

- A** ATEX
- B** Exia 10mA
- C** IECEx ⁽²⁾
- E** Exme 0.5W
- G** ATEX Exd IIB
- H** Exm
- J** Exme 2.4W
- R** GOST CU TR ⁽³⁾
- X** NEPSI ⁽⁴⁾

Note:

- (1) "H" option not available with Exia solenoids
- (2) IECEx only available with Exia and Exd Solenoids
- (3) GOST CU TR only available with Exd solenoids
- (4) NEPSI only available with Exia and Exd solenoids

DIMENSIONS (mm)



COIL TYPE	A	B	C
Heavy Duty Mazak Plug & Socket	36	77	85
Standard Terminal Box	36	64	93
SS Terminal Box	52	84	110
ExnA Terminal Box	36	64	93
Exd SS Terminal Box	52	84	110
Exm Flying Lead	36	71	101
Exme Terminal Box	36	64	93
Exia SS Terminal Box	52	84	121
Exia Std. Terminal Box	36	64	104
Exia Plug & Socket	36	90	93

MATERIAL SPECIFICATIONS

STANDARD

Body	Black Anodised Aluminium (Dural)
Banjo Bolt	Brass Nickel Plated
Jet	Brass
Seals	Nitrile & Viton

VALVE SPECIFICATIONS

STANDARD

Inlet Port Connection Size	1/4" BSP
Outlet Port Connection Size	1/4" BSP Banjo Bolt
Exhaust Port Connection Size	1/8" BSP
Working Pressure	0 to 10 bar
Cv Factor	0.06 (0.04 Intrinsically Safe Coil)
Flow Rate (at 6 bar with 1 bar pressure drop)	62 l/min 42 l/min (Intrinsically Safe Coil)
Maximum Ambient Temperature	+80 °C
Minimum Working Temperature	-20 °C

COIL DETAILS

Coil Type	Plug & Socket	Terminal Box	ExnA	Exd	Exm	Exia
Area Class	Safe	Safe	Zone 2	Zones 1 & 2	Zones 1 & 2	Zone 0, 1 & 2
Area Category	N/A	N/A	ExN II T4-T6	Exd IIC T3-T6	Exm IIC T5	Exia IIC T6
Ingress Protection	IP65	IP65	IP65	IP66	IP65	IP65
Cable Entry	PG.9	M20 x 1.5	M20 x 1.5	M20 x 1.5	Flying leads	M20 x 1.5
Ambient Temperature	-20 to +80 °C	-20 to +80 °C	-40 to +60 °C	-60 to +80 °C	-20 to +65 °C	-40 to +65 °C
Magnetic Wire Class	H	H	H	H	H	H

*** FURTHER SOLENOID OPTIONS AVAILABLE ON REQUEST**