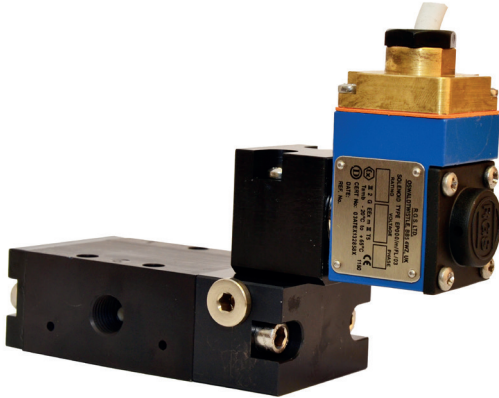
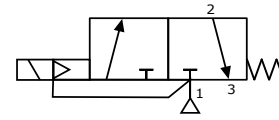


E23--C Series, 1/4", 3/2 Function Solenoid Valve



DESCRIPTION

3 port 2 position, pilot operated solenoid valve.

Hazardous area approved pilot operators (ExnA, Ex e mb, Exd and Exia) are available with various international approvals – ATEX, IECEX, FM, GOST CU TR (Russia) and NEPSI (China).

Body material available in

- Aluminium (standard)
- Stainless Steel
- Brass

Seal kit available – VSK200

FEATURES

- Internal or external pilot air connection
- Interchangeable CNOMO interface coils, including various hazardous area options
- Single coil spring return function or double coil stay put function
- Convenient fixing holes to enable bracket mounting
- Pilot exhaust dust caps fitted as standard
- SIL 2 Capable (De-energise to trip @ HFT=0) SIL 3 Capable (De-energise to trip @ HFT=1)

PRODUCT CODE:

E 2 3

C

OPERATOR

OPTIONS 1

0

COIL

DESIGNATOR

A B F G J R X

VOLTAGE OPTIONS 2

SEE BELOW FOR
PRODUCT CODE
DETAILS

Any of the below options that
are not required enter '0' in
relevant box.

Operator

- | | | |
|---|---|--|
| 1 | 8 | Spring return, internal pilot air feed |
| 8 | 0 | Spring return, external pilot air connection |
| 1 | 9 | Double solenoid, internal pilot air feed |
| 9 | 0 | Double solenoid, external pilot air connection |

Coil

- | | |
|---|---------------------------------|
| A | Exia |
| B | Terminal Box |
| D | Exd |
| H | Plug & Socket Exia |
| K | MC30 Plug & Socket |
| L | MC30 Plug & Socket with LED |
| P | Plug & Socket |
| S | Exia Stainless Steel Housing |
| Y | ExnA Plug & Socket |
| 4 | Stainless Steel Housing |
| 5 | ExnA Stainless Steel Housing |
| 8 | Ex e mb Stainless Steel Housing |

Options 1

- | | |
|---|-----------------------------|
| C | Lever manual override |
| D | Push button manual override |
| S | Screw driver override |
| 0 | No option required |
- * Not SIL approved with manual override options**

Standard Voltage

- | | |
|---|---------------------------------|
| B | 24v DC |
| H | 24v DC Low Power ⁽¹⁾ |
| R | 24v AC (50/60 Hz) |
| T | 110v AC (50/60 Hz) |
| N | 220v AC (50/60 Hz) |
| U | 240v AC (50/60 Hz) |

*** A comprehensive range of non-standard voltages available on request**

Note:

- (1) "H" option not available with Exia solenoids
- (2) IECEX only available with Exia and Exd Solenoids
- (3) GOST CU TR only available with Exd solenoids
- (4) NEPSI only available with Exia and Exd solenoids

Designator

- | | |
|---|--------------------------------|
| A | ATEX / IECEX ⁽²⁾ |
| B | ATEX / IECEX ^(10mA) |
| F | FM / CSA |
| G | ATEX Exd IIB |
| J | ATEX Ex e mb |
| R | GOST CU TR ⁽³⁾ |
| X | NEPSI ⁽⁴⁾ |

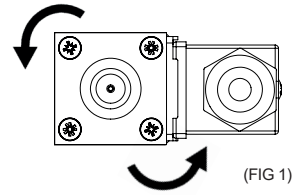
Options 2

- | | |
|---|--|
| B | Valve body brass |
| C | Valve body brass and NPT ports |
| D | Valve body brass, NPT ports and 1/2" NPT electrical connection |
| E | 1/2" NPT electrical connection |
| L | Low temperature duty -40°C |
| M | NPT ports and 1/2" NPT electrical connection |
| N | NPT ports |
| P | Valve body stainless steel, NPT ports and 1/2" NPT electrical connection |
| R | Valve body stainless steel and NPT ports |
| S | Valve body stainless steel |

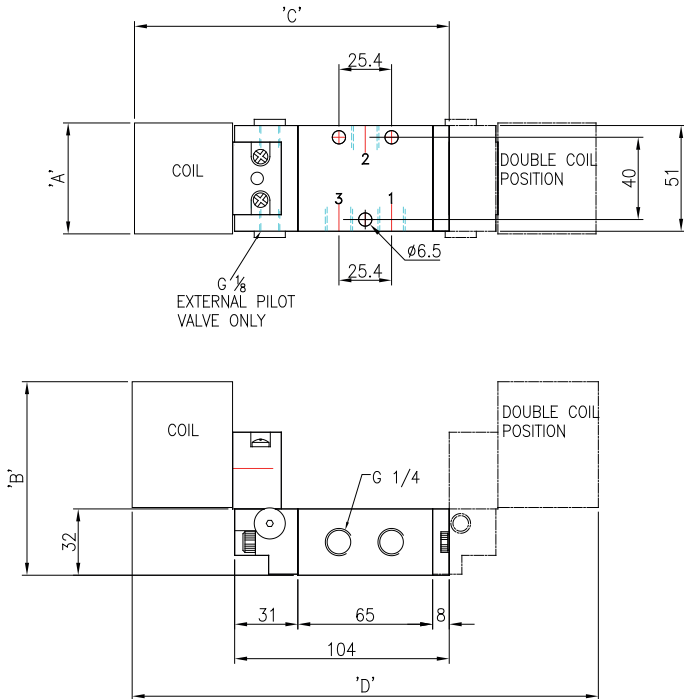
*** A comprehensive range of non-standard options available on request**

COIL ORIENTATION

The coil itself can be rotated in 90° steps by releasing the four securing screws. (FIG 1) When rotating the coil care should be taken to ensure the core assembly (core, spring, seal and washer) remains intact and aligned correctly. This is easily achieved by only lifting the coil the small amount required to clear the screws enabling the coil to be rotated.



DIMENSIONS (mm)



COIL TYPE

	A	B	C	D
MC30 Plug & Socket	36	102	149	216
Heavy Duty Mazak Plug & Socket	36	113	149	216
Standard Terminal Box	36	100	157	232
SS Terminal Box	52	120	174	266
ExnA SS Terminal Box	52	120	174	266
Exd SS Terminal Box	52	120	174	266
Ex e mb Terminal Box	52	120	174	266
Piezo Operator	32	73	158	234
Exia SS Terminal Box	52	120	181	280
Exia Std. Terminal Box	36	100	164	246
Exia Plug & Socket	36	126	152	222

MATERIAL SPECIFICATIONS

STANDARD

Body and End Caps	Black Anodised Aluminium (Dural)
Spool	Hard Anodised Aluminium PTFE Impregnated
Jet	Brass
Spacers	Glass Filled Acetal
Seals	Nitrile (Alternative Seals Available)
Spring	Music Wire

VALVE SPECIFICATIONS

STANDARD

Port Connection Size	1/4" BSP
Working Pressure Internal Pilot Version	3 to 10 bar
Working Pressure External Pilot Version	3 to 10 bar
Minimum External Pilot Pressure	3 bar
Cv Factor	1.2
Flow Rate (at 6 bar with 1 bar pressure drop)	1246 l/min
Maximum Ambient Temperature	+80 °C
Minimum Working Temperature	-20 °C

COIL DETAILS

Coil Type	Plug & Socket	Terminal Box	ExnA	Exd	Ex e mb	Exia
Area Class	Safe	Safe	Zone 2	Zones 1 & 2	Zones 1 & 2	Zone 0, 1 & 2
Area Category	N/A	N/A	Ex nA II T4-T6	Exd IIC T3-T6	Ex e mb IIC T4	Exia IIC T6
Ingress Protection	IP65	IP65	IP65	IP66	IP66	IP65
Cable Entry	PG.9	M20 x 1.5	M20 x 1.5 or PG.9	M20 x 1.5	M20 x 1.5	M20 x 1.5
Ambient Temperature	-20 to +80 °C	-20 to +80 °C	-20 to +60 °C	-20 to +80 °C	-20 to +65 °C	-20 to +65 °C
Magnetic Wire Class	H	H	H	H	H	H

*** FURTHER SOLENOID OPTIONS AVAILABLE ON REQUEST**