

MATERIAL SPECIFICATIONS

STANDARD

Body And End Caps	Black Anodised Aluminium (Dural)
Spool	Hard Anodised Aluminium PTFE Impregnated
Jet	Brass
Spacers	Natural Anodised Aluminium (Dural)
Seals	Nitrile
Spring	Music Wire

VALVE SPECIFICATIONS

STANDARD

Port Connection Size	%63
Working Pressure Internal Pilot Version	3 to 10 bar
Working Pressure External Pilot Version	3 to 10 bar
Minimum External Pilot Pressure	3 bar
Cv Factor	10
Flow Rate (at 6 bar with 1 bar pressure drop)	OPLQ
Maximum Ambient Temperature	+80 °C
Minimum Working Temperature	-20 °C

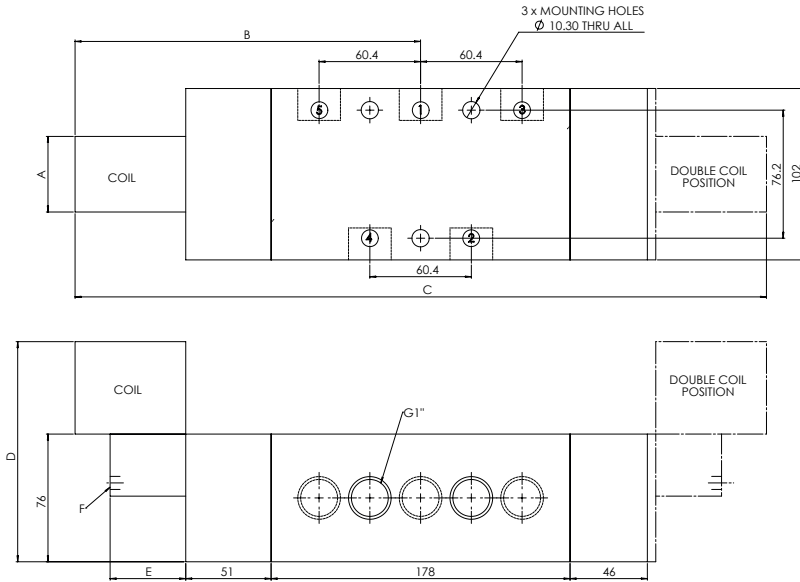
COIL DETAILS

Coil Type	Plug & Socket	Terminal Box	ExnA	Exd	ExH mE	Exia
Area Class	Safe	Safe	Zone 2	Zones 1 & 2	Zones 1 & 2	Zone 0, 1 & 2
Area Category	1\$	1\$	ExQ\$II T4-T6	Exd IIC T3-T6	ExHm E IIC T	Exia IIC T6
Ingress Protection	IP65	IP65	IP65	IP66	IP6	IP65
Cable Entry	PG.9	M20 x 1.5	M20 x 1.5RU3*	M20 x 1.5	M20 x 1.5	M20 x 1.5
Ambient Temperature	-20 to +80 °C	-20 to +80 °C	-0 to +60 °C	-0 to +80 °C	-20 to +65 °C	-0 to +65 °C
Magnetic Wire Class	H	H	H	H	H	H

* FURTHER SOLENOID OPTIONS AVAILABLE ON REQUEST

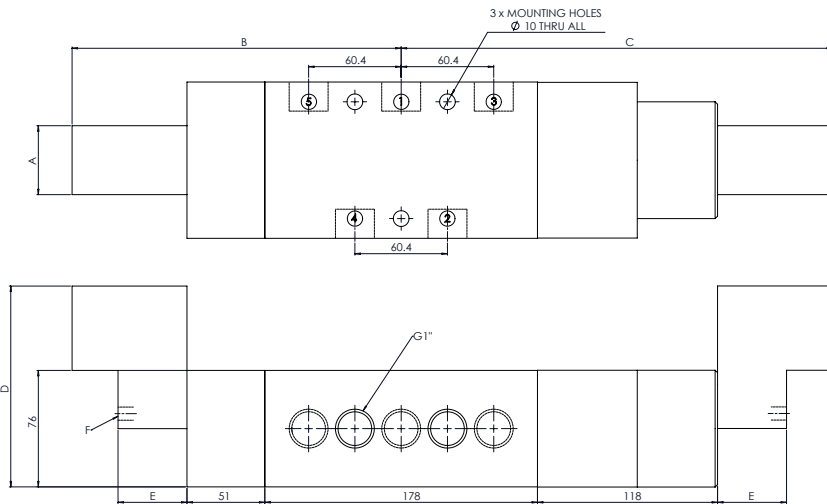
DIMENSIONS (mm)

5/2 Position



COIL TYPE	A	B	C	D	E	F
Plug & Socket	45	215	430	131	45	G 1/4
Terminal Box	35	205	410	131	35	G 1/8
ExnA SS	52	225	450	151	35	G 1/8
Exd	52	225	450	151	35	G 1/8
Exia	35	205	410	151	35	G 1/8
Exm	35	212	424	131	35	G 1/8

5/3 Position



COIL TYPE	A	B	C	D	E	F
Plug & Socket	45	215	282	131	45	G 1/4
Terminal Box	35	205	272	131	35	G 1/8
ExnA SS	52	225	292	151	35	G 1/8
Exd	52	225	292	151	35	G 1/8
Exia	35	205	272	151	35	G 1/8
Exm	35	212	279	131	35	G 1/8