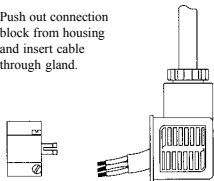


Electrical Connections

Electrical connections vary depending on the coil type fitted to the valve. The principal alternatives are either Plug and Socket or Conduit Entry.

Plug and Socket Coils

Push out connection block from housing and insert cable through gland.



Electrical connections are made to terminals 1, 2 and earth if necessary. When a surge suppression diode has been fitted ensure that terminal 1 is positive and terminal 2 is negative.



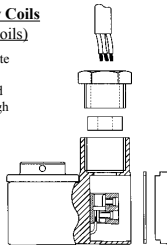
Top view without Surge suppression diode.



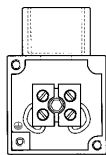
Top view with Surge suppression diode.

Conduit Entry Coils (terminal box coils)

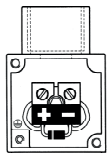
Remove cover plate to allow access to terminal block and insert cable through gland and bush.



Electrical connections are made to the two terminals and earth if necessary. When a surge suppression diode has been fitted the terminals will be polarity sensitive. Ensure correct connection.



Top view without Surge suppression diode.

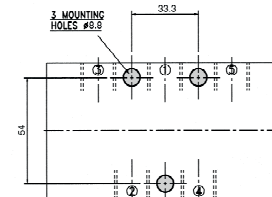
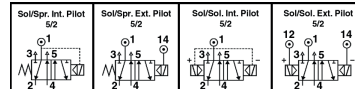


Top view with Surge suppression diode.

| | | |
|-------------------|------------|---|
| Part codes | E8518C**** | Solenoid / Spring, Internally Piloted |
| | E8580C**** | Solenoid / Spring, Externally Piloted |
| | E8519C**** | Solenoid / Solenoid, Internally Piloted |
| | E8590C**** | Solenoid / Solenoid, Externally Piloted |

Installation

The valve body is machined with three mounting holes to the dimensions shown below. This enables the user to mount the valve to a bracket or other suitable location.



Air supply requirements

Filtration & Lubrication

The supply air shall be clean, dry and free from water, moisture, foreign parts and debris. It is recommended that a <40µ filter/regulator be installed as close to the valve as possible to ensure proper supply air quality. The air supply can be either lubricated or non-lubricated. In the case of lubricated air being used, the recommended oil types are ISO and UNI FD22 (Energol HPL ~ Spissimo ~ Mobil DTE ~ Telles Oil).

| Air Pressure Range Table | Internal Pilot Sol. / Spring | External Pilot Sol. / Spring | Internal Pilot Sol. / Sol. | External Pilot Sol. / Sol. |
|------------------------------|------------------------------|------------------------------|----------------------------|----------------------------|
| Working Pressure (p.s.i.) | 45 to 120 | 0 to 120 | 22 to 120 | 0 to 120 |
| Working Pressure (Bar) | 3 to 8 | 0 to 8 | 1.5 to 8 | 0 to 8 |
| Min. Pilot Pressure (p.s.i.) | N/A | 45 | N/A | 22 |
| Min. Pilot Pressure (bar) | N/A | 3 | N/A | 1.5 |

Connections

Pneumatic Connections

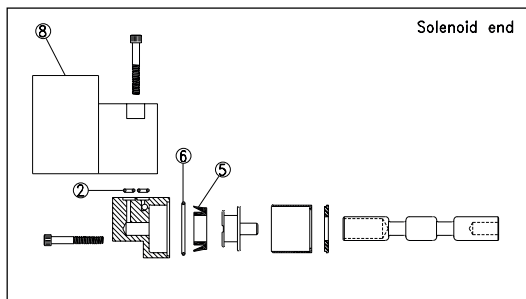
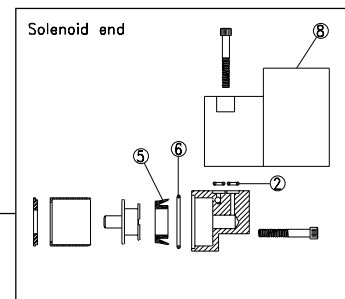
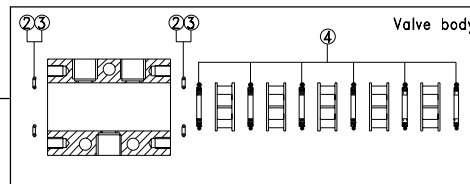
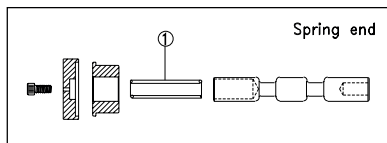
All valve ports are tapped for 1" BSP or 1" NPT male connectors. The mains air connection is clearly marked with a number 1. The two outlet ports are marked with numbers 2 and 4, and the two exhaust ports are marked with numbers 3 and 5. (See pneumatic symbols at top of page.) Note that if ports are tapped NPT then the body will be stamped with 'NPT' to identify this variation.

Electrical Connections

For electrical connection details and information please refer to the back of this sheet.

Spares Information - Product E85, 'Cnomo' Series

pneumatrol



| Item 8 | | | | | |
|---------------------------|---------|------------|--------------------------------|---------|-------------|
| Safe area coil assemblies | | | Hazardous area coil assemblies | | |
| Coil type | Voltage | Part code | Coil type | Voltage | Part code |
| | | | EExia | 24v DC | E13AXCA00BA |
| Terminal Box | 24v DC | E13AXCB00B | EExd | 24v DC | E13AXCD00BA |
| | 110v AC | E13AXCB00T | EExd | 110v AC | E13AXCD00TA |
| | 240v AC | E13AXCB00U | EExd | 240v AC | E13AXCD00UA |
| MC30 | 24v DC | E13AXCK00B | EExm | 24v DC | E13AXC900BH |
| | 110v AC | E13AXCK00T | EExm | 110v AC | E13AXC900TH |
| | 240v AC | E13AXCK00U | EExm | 240v AC | E13AXC900UH |
| Plug & Socket | 24v DC | E13AXCP00B | ExN | 24v DC | E13AXCN00BA |
| | 110v AC | E13AXCP00T | ExN | 110v AC | E13AXCN00TA |
| | 240v AC | E13AXCP00U | ExN | 240v AC | E13AXCN00UA |

| Spares parts kit | Consisting of | Item | Quantity |
|---------------------|-----------------------|------|----------|
| VSK1001 | Spring | 1 | 1 |
| | Seal* | 2 | 8 |
| | Blanking Disc* | 3 | 2 |
| | Seal | 4 | 6 |
| | Cup Seal | 5 | 2 |
| | Seal | 6 | 2 |
| VSK1001/ SPACERS | SEAL KIT + SPACERS | | |

Note 1:

Note all parts are required for each individual valve.

Note 2:*

Item 2 is used for internally piloted valves.

Item 3 is used for externally piloted valves.