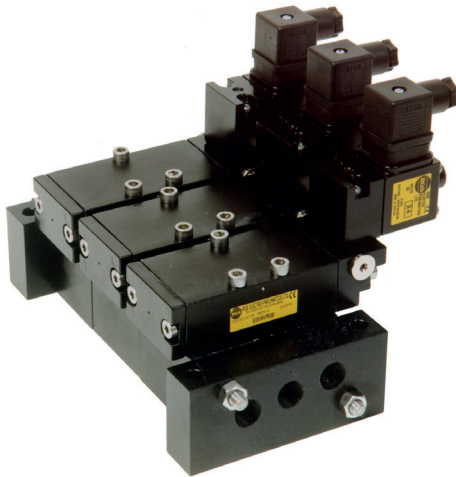


## E25--V Series, 1/4", 5/2 Function Solenoid Valves

CALL: +44 (0)1254 872277  
E-MAIL: sales@pneumatrol.com



### DESCRIPTION

5 port 2 position, Universal sub-base mount solenoid valve.

Valve is illustrated with safe area plug & socket coils.

Body material available in

- Aluminium (standard)
- Stainless Steel
- Brass

Seal kit available - VSK200/USB

### FEATURES

- 3/8" BSP inlet and exhaust connections and 1/4" BSP outlets
- Various manual override options
- Mains air isolating screw
- Single coil spring return function or double coil stay put function
- Pilot exhaust dust caps fitted as standard
- Interchangeable CNOMO interface coil units, including hazardous area options

PRODUCT CODE: **E 2 5**

OPERATOR COIL BANK No. VOLTAGE DESIGNATOR OPTIONS 2

SEE BELOW FOR PRODUCT CODE DETAILS

Any of the below options that are not required enter '0' in relevant box.

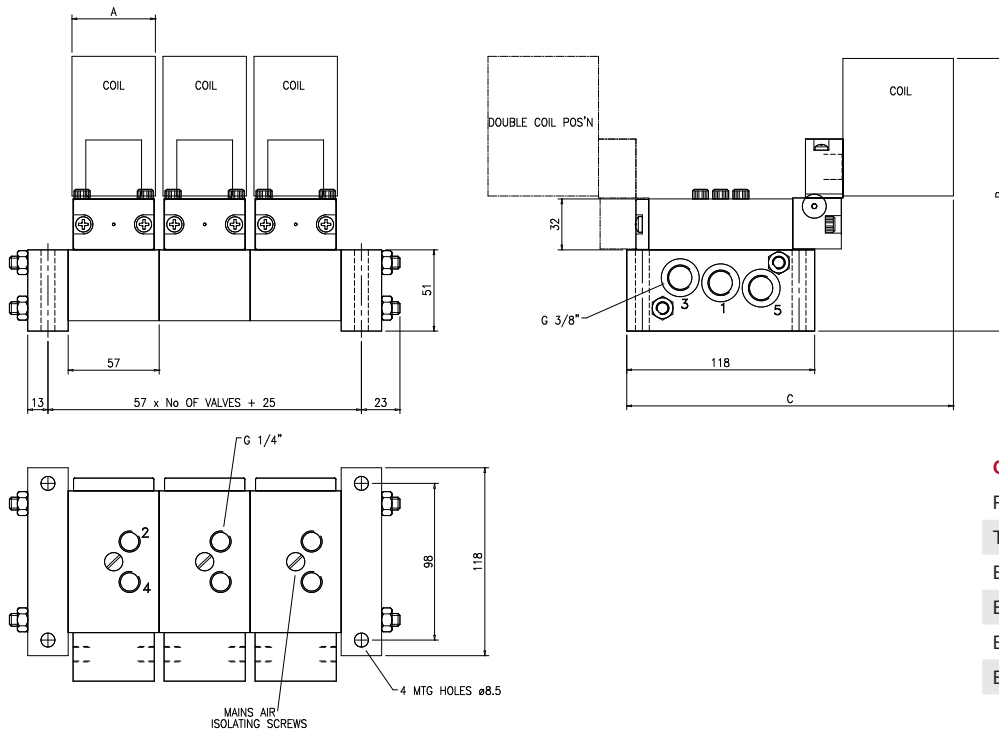
Operator	Coil	Options 1	Bank No.	Standard Voltage	Designator	Options 2
<b>1 8</b> Spring return, internal pilot air feed	<b>A</b> Exia (BASEEFA)	<b>C</b> Lever manual override	<b>2</b> Bank of two (2)	<b>B</b> 24v DC	<b>A</b> ATEX	<b>B</b> Valve body brass
<b>1 9</b> Double solenoid, internal pilot air feed	<b>B</b> Terminal Box	<b>D</b> Push button manual override	<b>3</b> Bank of three (3)	<b>H</b> 24v DC Low Power <sup>(1)</sup>	<b>C</b> IECEX <sup>(2)</sup>	<b>C</b> Valve body brass and NPT ports
	<b>U</b> Exia (FM)	<b>S</b> Screw driver override (standard)	<b>4</b> Bank of four (4)	<b>R</b> 24v AC (50/60 Hz)	<b>E</b> Exme 0.5W	<b>D</b> Valve body brass, NPT ports and 1/2" NPT electrical connection
	<b>D</b> Exd	<b>0</b> No option required	<b>5</b> Bank of five (5)	<b>T</b> 110v AC (50/60 Hz)	<b>G</b> ATEX Exd IIB	<b>E</b> 1/2" NPT electrical connection
	<b>K</b> MC30 Plug & Socket		<b>6</b> Bank of six (6)	<b>N</b> 220v AC (50/60 Hz)	<b>H</b> Exm	<b>L</b> Low temperature duty -40°C
	<b>N</b> ExnA		<b>7</b> Bank of seven (7)	<b>U</b> 240v AC (50/60 Hz)	<b>J</b> Exme 2.4W	<b>M</b> NPT ports and 1/2" NPT electrical connection
	<b>P</b> Plug & Socket		<b>8</b> Bank of eight (8)		<b>R</b> GOST CU TR <sup>(3)</sup>	<b>N</b> NPT ports
	<b>S</b> Exia (BASEEFA) Stainless Steel Housing		<b>9</b> Bank of nine (9)		<b>X</b> NEPSI <sup>(4)</sup>	<b>P</b> Valve body stainless steel, NPT ports and 1/2" NPT electrical connection
	<b>0</b> No Coil Unit		<b>A</b> Bank of ten (10)			<b>R</b> Valve body stainless steel and NPT ports
	<b>9</b> Exm					<b>S</b> Valve body stainless steel
						<b>X</b> Valve suitable for use with Oxygen

\* A comprehensive range of non-standard voltages available on request

**Note:**

- (1) "H" option not available with Exia solenoids
- (2) IECEX only available with Exia and Exd Solenoids
- (3) GOST CU TR only available with Exd solenoids
- (4) NEPSI only available with Exia and Exd solenoids

**DIMENSIONS (mm)**



COIL TYPE	A	B	C
Plug & Socket	35	161	173
Terminal Box	35	154	174
ExnA	35	154	174
Exd	52	168	190
Exia	35	154	182
Exm	35	161	169

**MATERIAL SPECIFICATIONS**

**STANDARD**

Body and End Caps	Black Anodised Aluminium (Dural)
Spool	Hard Anodised Aluminium PTFE Impregnated
Jet	Brass
Spacers	Glass Filled Acetal
Seals	Nitrile
Spring	Music Wire
Tie Rods & Nuts	Stainless Steel

**VALVE SPECIFICATIONS**

**STANDARD**

Inlet and Exhaust Port Connection Size	3/8" BSP
Outlet Port Connection Size	1/4" BSP
Working Pressure	3 to 10 bar
Cv Factor	1.2
Flow Rate (at 6 bar with 1 bar pressure drop)	1246 l/min
Maximum Ambient Temperature	+80 °C
Minimum Working Temperature	-20 °C

**COIL DETAILS**

Coil Type	Plug & Socket	Terminal Box	ExnA	Exd	Exm	Exia
Area Class	Safe	Safe	Zone 2	Zones 1 & 2	Zones 1 & 2	Zone 0, 1 & 2
Area Category	N/A	N/A	ExN II T4-T6	Exd IIC T3-T6	Exm IIC T5	Exia IIC T6
Ingress Protection	IP65	IP65	IP65	IP66	IP65	IP65
Cable Entry	PG.9	M20 x 1.5	M20 x 1.5	M20 x 1.5	Flying leads	M20 x 1.5
Ambient Temperature	-20 to +80 °C	-20 to +80 °C	-40 to +60 °C	-60 to +80 °C	-20 to +65 °C	-40 to +65 °C
Magnetic Wire Class	H	H	H	H	H	H

**\* FURTHER SOLENOID OPTIONS AVAILABLE ON REQUEST**