

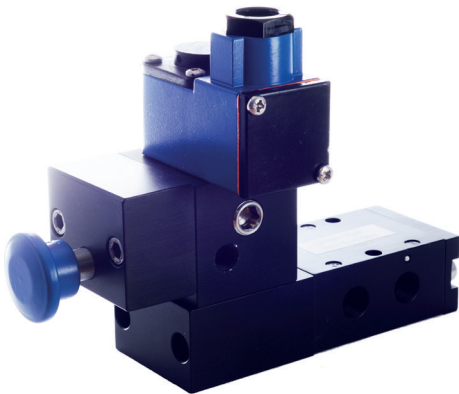
CALL: +44 (0)1254 872277

E-MAIL: [sales@pneumatrol.com](mailto:sales@pneumatrol.com)

## SAFETY RESET FUNCTION

Pneumatrol offers solenoid valves with safety reset function to suit a wide range of applications within the Process industry.

Upon energising the solenoid, the valve will not operate until the Safety Reset Button is pressed. If the solenoid is de-energised or if there is a loss of air pressure or electrical supply, the valve will close. The valve will only re-open when power and air pressure are reinstated and when the Safety Reset Button is pressed.



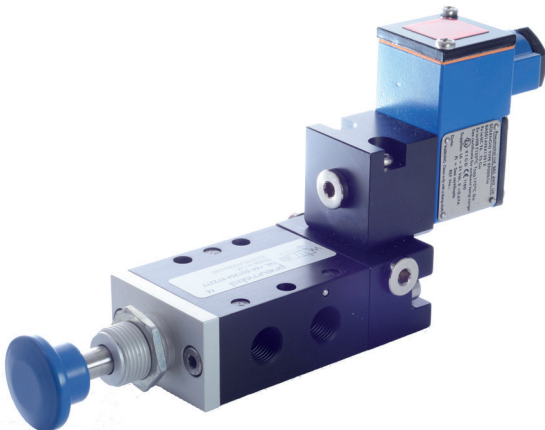
Products available with this function are:

- E23 series
- E25 series
- E43 series
- E45 series

## MANUAL RESET FUNCTION

Pneumatrol offers solenoid valves with manual reset function to suit a wide range of applications within the Process industry.

Upon de-energising the solenoid or if there is a loss of air pressure or electrical supply, the valve will not close until the Manual Reset Button is pressed. The valve will only re-open when power and air pressure are reinstated.



Products available with this function are:

- C15 series
- E23 series
- E25 series
- E43 series
- E45 series